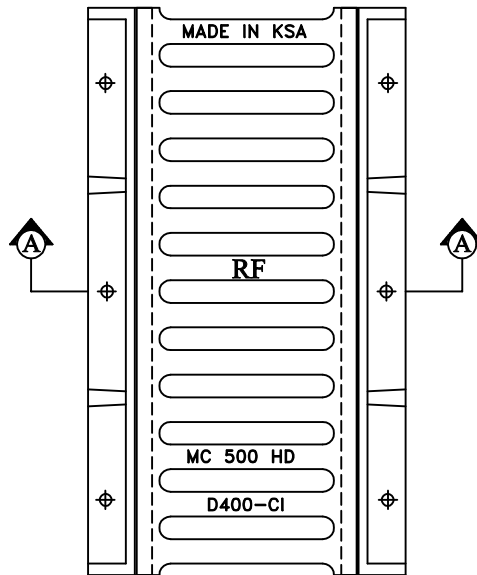
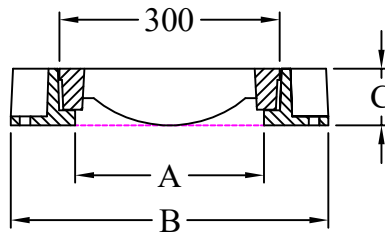


**Heavy Duty Grey Cast Iron  
Grate with Side Bars**

- Features:-**  
 Grate Length 750 mm  
 Holes for Anchoring



**PLAN**



**SECTION 'A-A'**

CATALOGUE NO.	MATERIAL	CLEAR OPENING A(mm)	OVER BASE B(mm)	DEPTH C(mm)	LOADING (TONS)	SPECIFICATIONS
MC - 500 (HD)	Cast Iron	250 mm	420 mm	75	40	BS EN 124

**RIYADH FOUNDRY**

Riyadh :- Tel. 4984323

Fax. 4980395



All dimensions are in millimeter

TITLE : **Channel Grates with Side Bars**

DRAWN : SAJ

APPROVED :

NOTE: DESIGN CHANGES RESERVED WITH RIYADH FOUNDRY

CHECKED :

DATE : 01/01/2020

SCALE : N T S

DRG.NO: MC - 500 (HD)