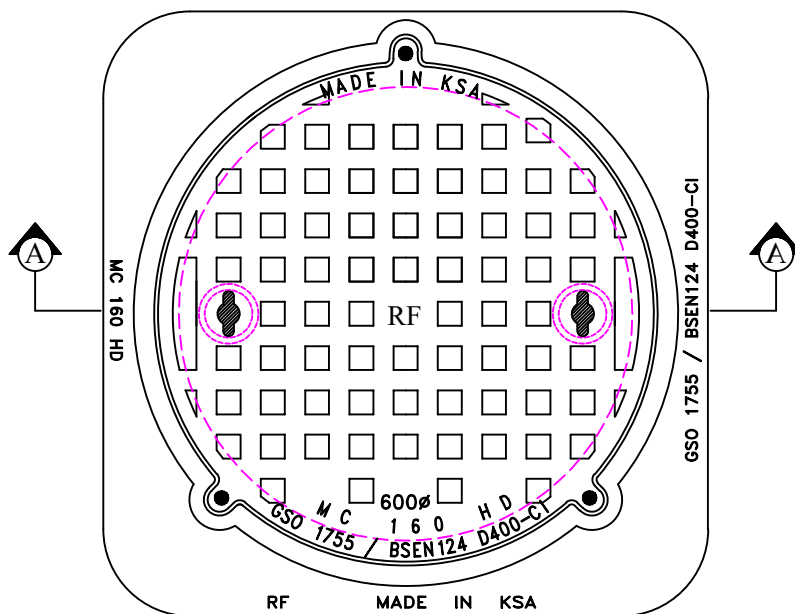
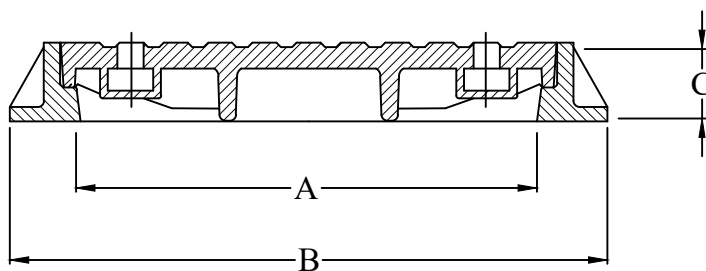


Heavy Duty Grey Cast Iron  
Covers and Frames

Feature:-  
Closed key holes  
Three Locking Bolts  
Rubber Gasket



PLAN



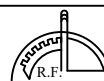
SECTION 'A-A'

CATALOGUE NO.	MATERIAL	CLEAR OPENING A(mm)	OVER BASE B(mm)	DEPTH C(mm)	LOADING (TONS)	SPECIFICATIONS
MC - 160 (HD)	Cast Iron	Ø 600	800 Sq	100	40	BS EN 124

**RIYADH FOUNDRY**

Riyadh :- Tel. 4984323

Fax. 4980395



All dimensions are in millimeter

TITLE : Covers and Frames

DRAWN : abdul

APPROVED :

NOTE: DESIGN CHANGES RESERVED WITH RIYADH FOUNDRY

CHECKED :

DATE : 2023

SCALE : N T S

DRG.NO: MC - 160 (HD)