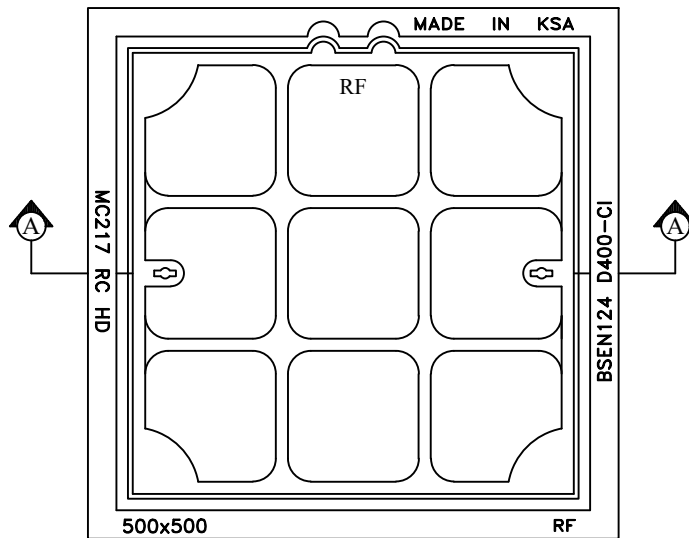
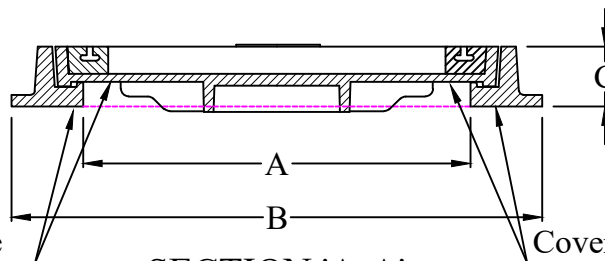


Heavy Duty
Grey Cast Iron Recessed Top
Cover and Frame

Features:-
Single Seal
Register
Closed Key Holes
Inscription Plate Available
Separately



PLAN



Cover Bottom Inscribe
RF , Made In KSA and
Model No.

SECTION 'A-A'

Cover Bottom Inscribe
BSEN124 D400-CI
500 x 500

CATALOGUE NO.	MATERIAL	CLEAR OPENING A(mm)	OVER BASE B(mm)	DEPTH C(mm)	LOADING (TONS)	SPECIFICATIONS
MC- 217 RC (HD)	Cast Iron	500 Sq	700 Sq	75	40	BS - EN

RIYADH FOUNDRY

Riyadh :- Tel. 4984323

Fax. 4980395



All dimensions are in millimeter		TITLE : Recessed Top Cover and Frame	
		DRAWN : Saj	APPROVED :
NOTE: DESIGN CHANGES RESERVED WITH RIYADH FOUNDRY		CHECKED :	
		DATE : 2023	DRG.NO: MC - 217 RC (HD)
		SCALE : N T S	