

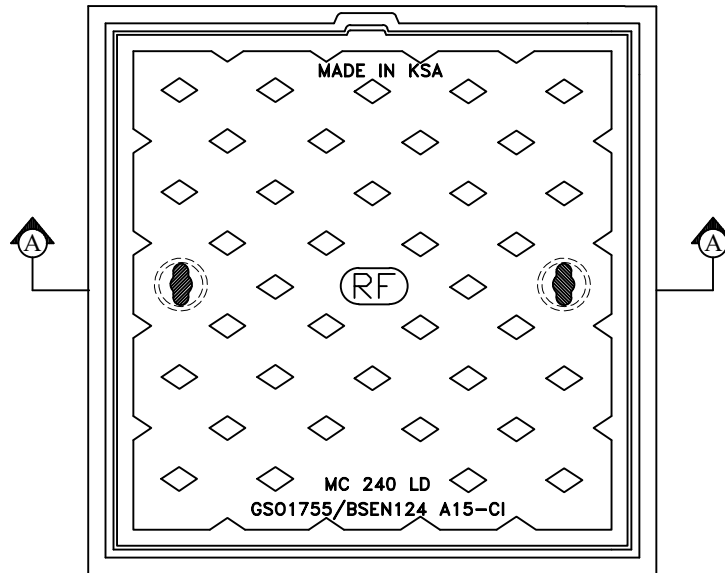
Light Duty Grey Cast Iron
Cover and Frame.

Features :-

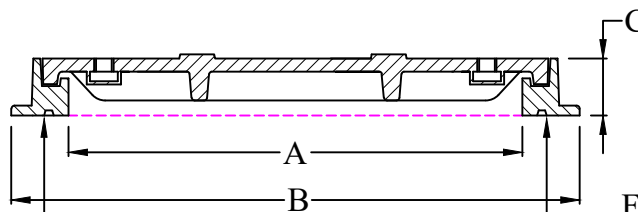
Register

Closed Key Holes

Single Seal



PLAN



Frame Bottom Inscribe
"RF" Logo, Model No.
and Made in KSA

Frame Bottom Inscribe
GSO1755/BSEN124 A15-CI
600x600 SQ

SECTION 'AA'

CATALOGUE NO.	MATERIAL	CLEAR OPENING A(mm)	OVER BASE B(mm)	DEPTH C(mm)	LOADING (TONS)	SPECIFICATIONS
MC- 240 (LD)	Grey Iron	600 Sq	700 Sq	50	1.5	BS - EN

RIYADH FOUNDRY

Riyadh :- Tel. 4984323

Fax. 4980395



All dimensions are in millimeter

TITLE : Manhole Cover and Frame

DRAWN : SAJ

APPROVED :

NOTE: DESIGN CHANGES RESERVED WITH RIYADH FOUNDRY

CHECKED :

DATE : 2023.

DRG.NO: MC - 240 (LD)

SCALE : 1 : 10