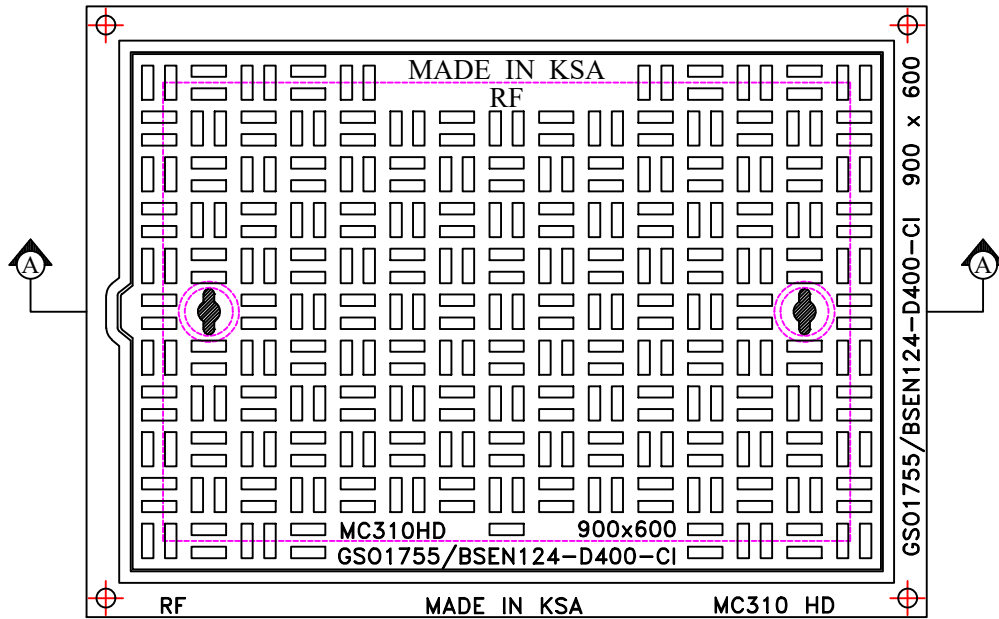
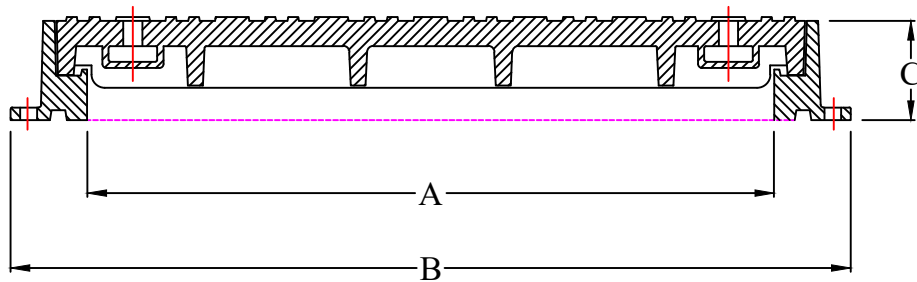


Heavy Duty Grey Cast Iron  
Covers and Frames


- Features : -  
Register  
Closed Key Holes  
Four Holes For Anchoring  
Single Seal



PLAN



SECTION 'A-A'

CATALOGUE NO.	MATERIAL	CLEAR OPENING A(mm)	OVER BASE B(mm)	DEPTH C(mm)	LOADING (TONS)	SPECIFICATIONS
MC- 310 (HD)	Cast Iron	900 x 600	1100 x 830	150	40	BS EN 124
				<b>RIYADH FOUNDRY</b>		
				Riyadh :- Tel. 4984323 Fax. 4980395		
All dimensions are in millimeter				TITLE : Covers and Frames		
				DRAWN : Saj		APPROVED :
NOTE: DESIGN CHANGES RESERVED WITH RIYADH FOUNDRY				CHECKED :		
				DATE : 2023.		DRG.NO: MC - 310 (HD)
				SCALE : N T S		