



شركة مسبك الرياض
Riyadh Foundry Co.





RIYADH FOUNDRY مسبك الرياض

Riyadh Foundry is a pioneer leading company in metals casting industry In Saudi Arabia. Established in Riyadh in 1976. We use state-of-the-art Technology and unique process capabilities to provide our customers With all casting choices. Our professional team produces plus expertise To ensure that our precision casting solutions always meets customers' expectations

Riyadh Foundry plays a dynamic role supporting the government's endeavors to expand the economy based on strong establishment and thriving support of national businesses.

Through development plans, the company has added additional production lines for Fiberglass, Plastic, Ductile Cast-Iron Pipe & Fittings which complies with local and international quality standards to meet all customer's requirements for the infrastructure construction sector.

We are dedicated to provide high-quality and comprehensive solutions to customers. Thanks to our extensive expertise and strict adherence to customer's requirement, our products are will know and sold worldwide. We have taken upon ourself excellence in work, speed in delivery and punctuality.

Vision

Achieving leadership in the foundry industry by providing the ideal products and raw materials according to local and international standards

Mission

To lead the development in the field of manufacturing and producing iron metal castings in Saudi Arabia. As well as strengthen our connection with our customers by the quick response

Values

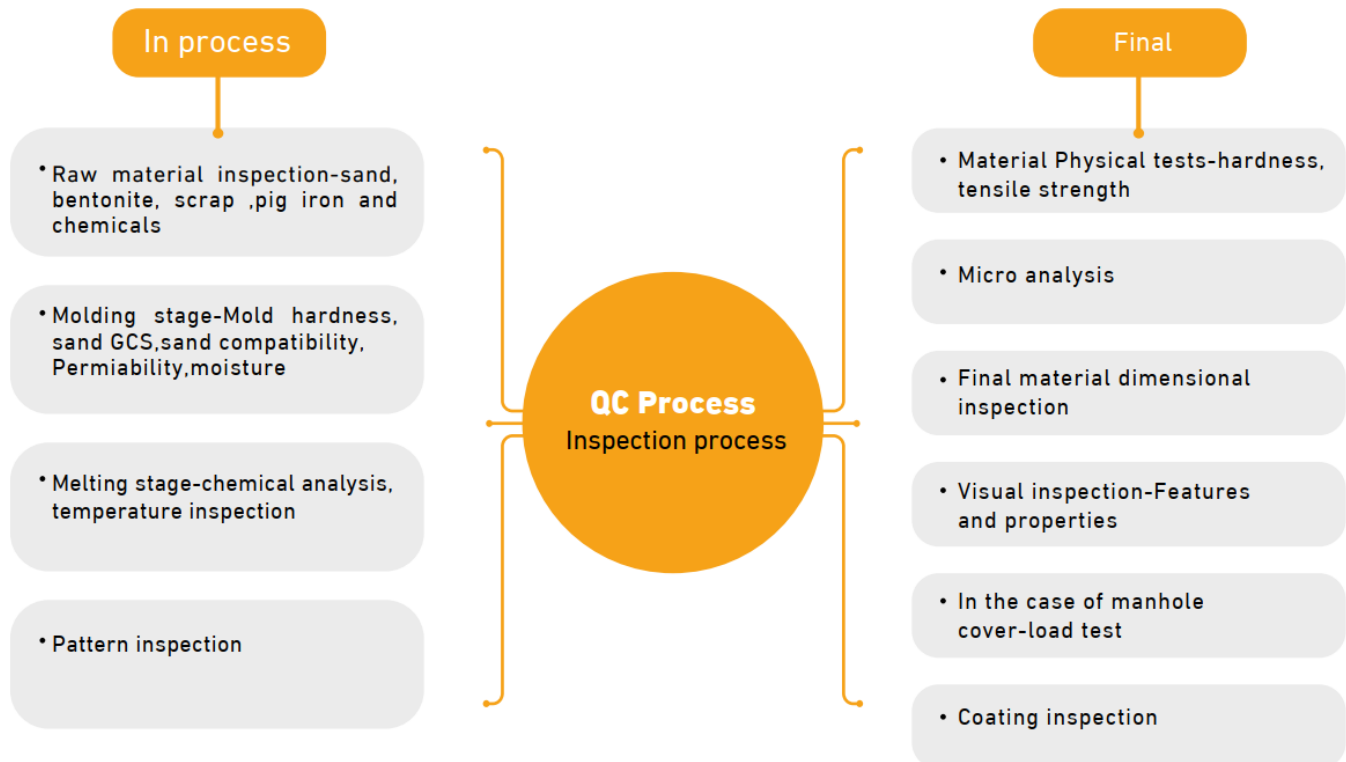
Seeking excellence by rewarding super - performing employees. Focusing on Development , Encouragement, Innovation and Creativity

QUALITY SYSTEM:

Our quality management system is based on ISO9001:2015 standard Throughout production – in progress quality, packing, dispatching And customer service. Whether initiating a chemical analysis of the Metal and sand or testing the tensile strength and dimensional specification Of our final output. We also certified SASO quality mark & BSI Kitemark.



RIYADH FOUNDRY
مسبك الرياض



CERTIFICATES

- Our company has following the quality management system ISO9001:2015.
- We also certified Environmental system ISO14001:2015
- We are the holder of BSI KITEMARK for our some products against BSEN-124:1994.
- We also certified for SASO (Saudi Arabian Standard Organization) for quality mark.





APPROVALS

Riyadh Foundry is the approved supplier of Aramco projects, Ministry of water, Ministry of Sewer, Saudi Telecom, Riyadh Metro and etc.

RIYADH FOUNDRY
مسبك الرياض



- Vendor ID in Saudi Aramco **10013592**
- Vendor ID in Saudi Electricity **R3866**
- Vendor ID in National Water Company **17436**
- Vendor ID in Ministry of Housing **6201**



RIYADH FOUNDRY
مسبك الرياض

Service and Range Of Products



Ductile Iron Pipes and Fittings



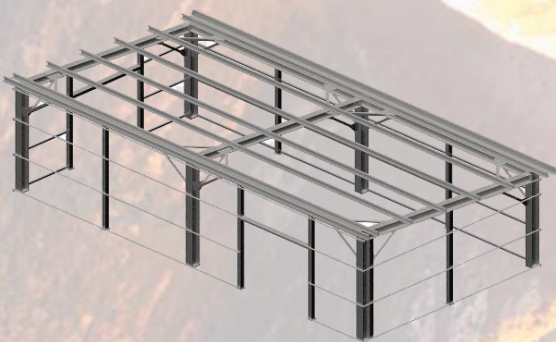
Manhole Covers & Frames



Fiberglass & PVC Plastic Products



Drainage System Products



Steel Engineering Services



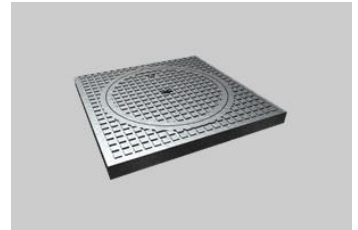
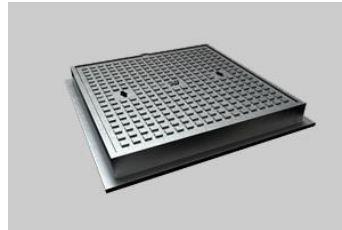
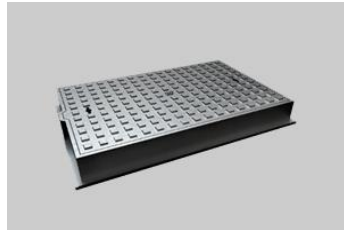
uPVC Pipes and Fittings

Manhole Covers & Frames

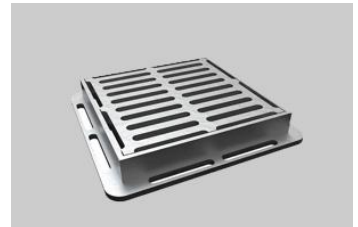
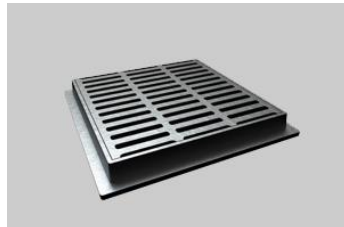


RIYADH FOUNDRY
مسبك الرياض

Riyadh Foundry's Manhole Cover Products, at the forefront of quality and Innovation, complies with BS EN124 Standards and are available in a wide Range of sizes, load ratings and Shapes, made from Grey cast iron or ductile iron, Due to the material property , Riyadh Foundry's Casting Products are suitable for Wide range of applications such as telecom, electricity, gas, sewer, water, gas stations, and etc. which allows to be used in various infrastructure applications.



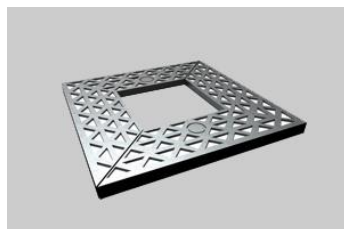
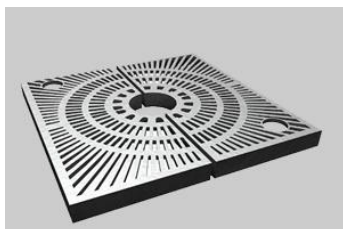
Manhole Covers & Frames (Ductile iron / Grey Cast Iron)



Gully Gratings (Ductile iron / Grey Cast Iron)



Channel Gratings (Ductile iron / Grey Cast Iron)



Tree Gratings (Ductile iron / Grey Cast Iron)



Catch Basin

Surface Box

Water Meter

CatchBasin

Ductile Iron Pipes and Fittings



RIYADH FOUNDRY
مسبك الرياض

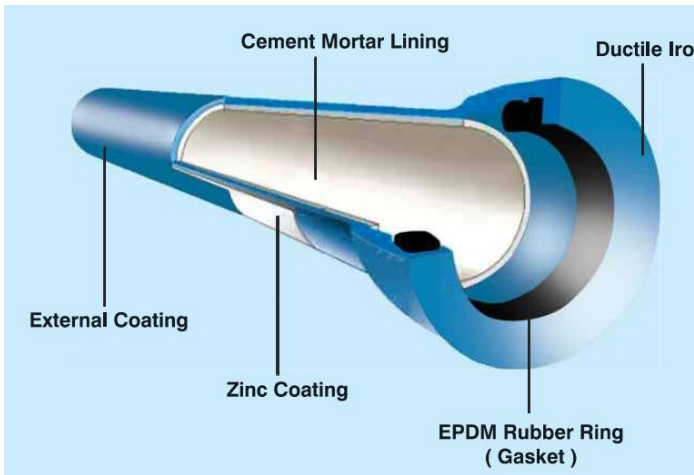
Ductile iron pipes and fittings are suitable for wide range of applications

Manufactured according to PS EN 545 / EN 598 / EN 969 / ISO 2531 and

Under the quality control system of ISO 9001 for quality assurance.

The standard nominal sizes DN of pipes to fittings are from 80 mm to 2000 mm

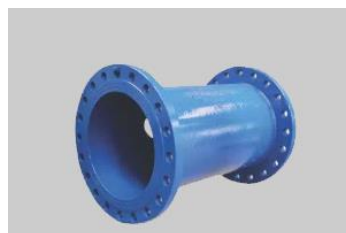
Every pipe and fitting are strictly subjected to hydrostatic pressure tests of the relevant standards.



Product	Ductile Iron (DI) Pipes suitable for Push-on-Joints*
Size Range	DN 80 to DN 1200
Class of DI Pipes	C20, C25, C30, C40, C50, C64, C100, PP, K-7 & K-9
Standard Length (in Meters)	5.5
Internal Linings	- Cement Mortar Lining of OPC / BFSC / SRC / HAC
	- Cement Mortar Lining with Epoxy Seal Coat
	- Cement Mortar Lining with Bituminous Seal Coat
External Coating - 1	- Zinc Coating (130 gm/m ² or 200 gm/m ² or 400 gm/m ²)
	- Alloy of Zinc & Aluminium (ZnAl) with minimum mass of 400 gm/m ²
External Coating - 2	- Bitumen Coating
	- Blue Epoxy
	- Red Epoxy
Outside OnSite Protection	Polyethylene Sleeving
Coating of Joint Area	Bitumen / Epoxy as per customer requirement
Conforming Specifications	- EN 545:2010 / EN 545:2006
	- ISO 2531:2009 / ISO 2531:1998
	- EN 598:2007 / ISO 7186:2011
	IS 8329 : 2000

also provide customized pipe joint design suitable for Restrained/Anchor Joints as per the requirement of Customer

Fittings Specifications



Size Range	80 mm – 2200 mm
Class of Fittings	C25, C30, C40, C50, C64, K12*, K14*
Joints	Socket and Spigot Joints (Push-on-joints)
	Flanged Joints (PN 10, PN 16, PN 25, PN 40).
Reference Specifications	ISO 2531/2009; BS EN 545/2010;
	BS EN 598/2007
Type of Linings	Internal Cement Mortar with various options of Cements i.e. OPC, BFSC, SRC, HAC, FBE Coatings
Type of Coatings ADDITIONAL COATINGS	Zinc- 130 gm/m ² ; Finishing layer : Blue/ Red Epoxy or Black Bitumen; Fusion Bonded Epoxy (FBE) Coating

* K12/K14 Fittings can be offered as per ISO 2532/1998 & BSEN 545/ 2006



Drainage System Products

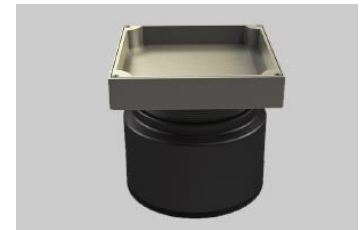
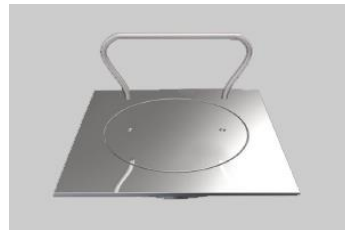
Our Drainage Products, at the forefront of quality and innovation, available in A wide range of sizes made from Grey Cast Iron Body with bottom Outlet, membrane clamp, adjustable round nickel bronze or stainless steel strainer, Which allows to be used in various infrastructure applications.



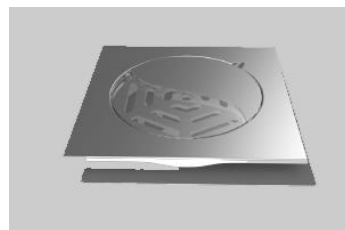
RIYADH FOUNDRY
مسبك الرياض



Roof Drains



Floor Cleanout



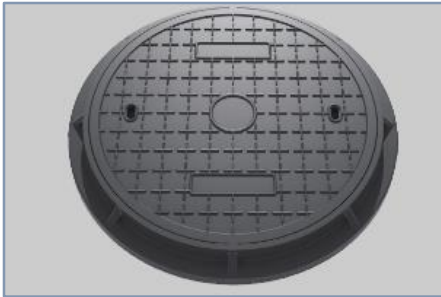
Floor Drains

Fiberglass & PVC Plastic Products

Due to the material property, Riyadh Foundry's Fiberglass Products are Available in a wide range of sizes, load ratings, Colors and Shapes and covered Wide range of applications and complies with SASO / ISO Standards.



RIYADH FOUNDRY
مسبك الرياض



Composite Access Covers



Fiberglass Square Covers



Fiberglass Covers with holes



Composite Access Gratings



PVC Manhole Covers



PVC Manhole Covers

uPVC pipes and Fittings

uPVC Production Line established to produce quality plastic products. Our main Product is Polyvinyl Chloride (uPVC) plastic pipes under I.S.O., B.S., A.S.T.M., S.A.S.O, And other International standards



RIYADH FOUNDRY
مسبك الرياض

uPVC pipes are used in all-important applications such as; high quality conduits for electric Wiring systems, soil waste for residential and multi-story buildings (above/ underground).

uPVC pipes are produced in sizes and thickness suitable for all working situations. Our products are sold in local markets and neighboring gulf countries. Having a successful management style Our Factory is committed to high quality and environmentally friendly products and therefore should be your choice .

Classes		Class 2		Class 3		Class 4		Class 5	
Pressure in Bars		4		6		10		16	
Nominal Outside Diameter	Nominal Tolerance Diameter	Nominal Wall Thick	Nominal Weight	Nominal Wall Thick	Nominal Weight	Nominal Wall Thick	Nominal Weight	Nominal Wall Thick	Nominal Weight
(mm)	(mm)	(mm)	Kg / Mtr	(mm)	Kg / Mtr	(mm)	Kg / Mtr	(mm)	Kg / Mtr
16	0.2	-	-	-	-	-	-	1.2	0.09
20	0.2	-	-	-	-	-	-	1.5	0.137
25	0.2	-	-	-	-	1.5	0.174	1.9	0.212
32	0.2	-	-	-	-	1.8	0.264	2.4	0.342
40	0.2	-	-	1.8	0.344	1.9	0.35	3	0.525
50	0.2	-	-	1.8	0.422	2.4	0.552	3.7	0.809
63	0.2	-	-	1.9	0.562	3	0.854	4.7	1.29
75	0.3	1.8	0.642	2.2	0.782	3.6	1.22	5.6	1.82
90	0.3	1.8	0.774	2.7	1.13	4.3	1.75	6.7	2.61
110	0.3	2.2	1.16	3.2	1.64	5.3	2.61	8.2	3.9
125	0.3	2.5	1.48	3.7	2.13	6	3.64	9.3	5.01
140	0.4	2.8	1.84	4.1	2.65	6.7	4.18	10.4	6.27
160	0.4	3.2	2.41	4.7	3.44	7.7	5.47	11.9	8.17
180	0.4	3.6	3.02	5.3	4.37	8.6	6.88	13.4	10.4
200	0.4	4	3.7	5.9	5.37	9.6	8.51	14.9	12.8
225	0.5	4.5	4.7	6.6	6.76	10.8	10.8	16.7	16.1
250	0.5	4.9	5.65	7.3	8.31	11.9	13.2	18.6	19.9
280	0.6	5.5	7.11	8.2	10.4	13.4	16.6	20.8	24.9
315	0.6	6.2	9.02	9.2	13.2	15	20.9	23.4	31.5
355	0.7	7	11.4	10.4	16.7	16.9	26.5	26.3	39.9
400	0.7	7.9	14.5	11.7	21.1	19.1	33.7	29.7	50.8

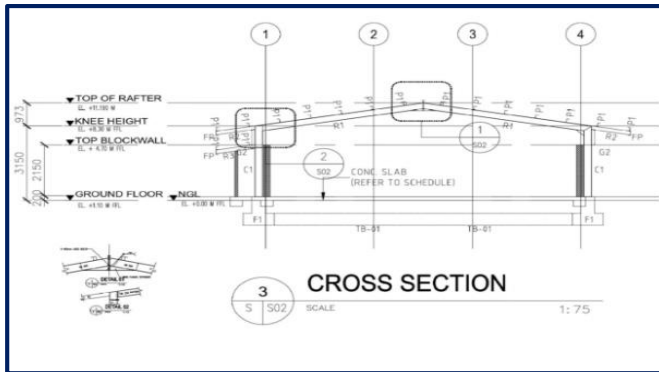


Steel Engineering Services

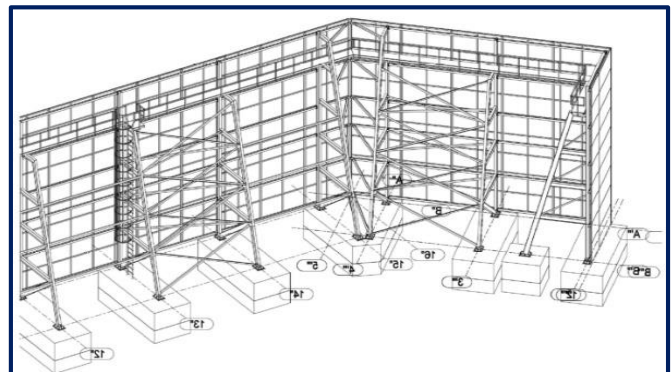
"Riyadh Foundry Co" Offers engineering services and turnkey solutions for Steel Structure and aluminium fabricated products; The Company provides the Design, fabrication and supply of steel Buildings, Fencing, Stairs & Railings, etc... Moreover, we are offers the engineering, procurement and construction services Needed to complete new projects in different market sectors, for a variety of purposes.



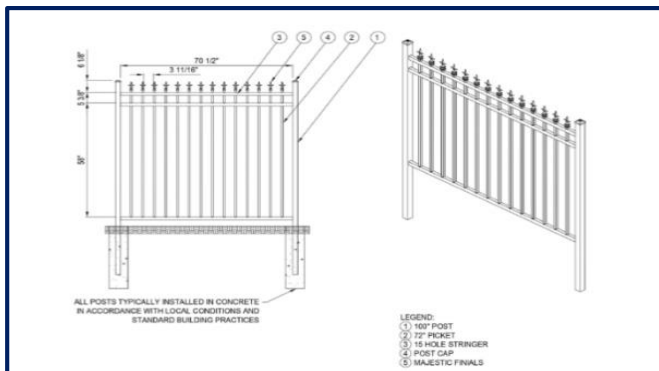
RIYADH FOUNDRY
مسبك الرياض



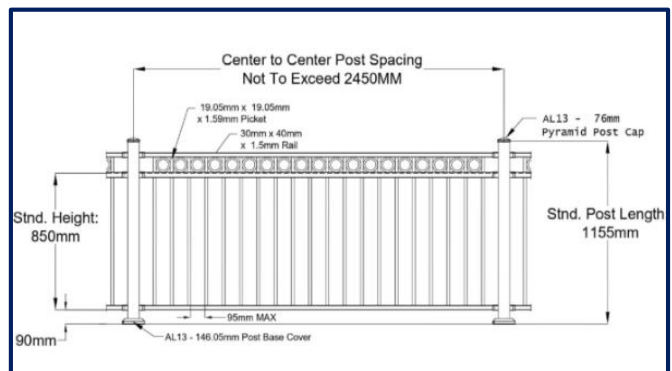
Steel Structures



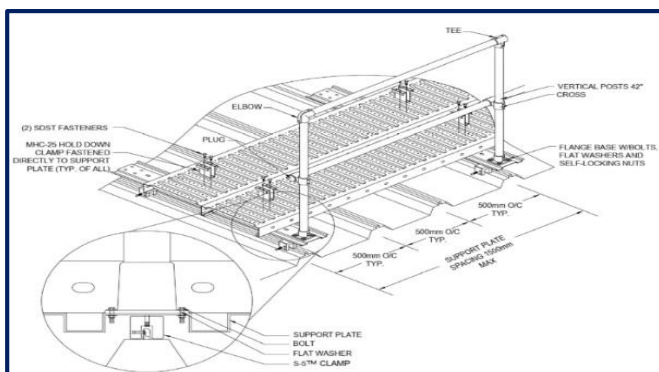
Hoardings & Signage



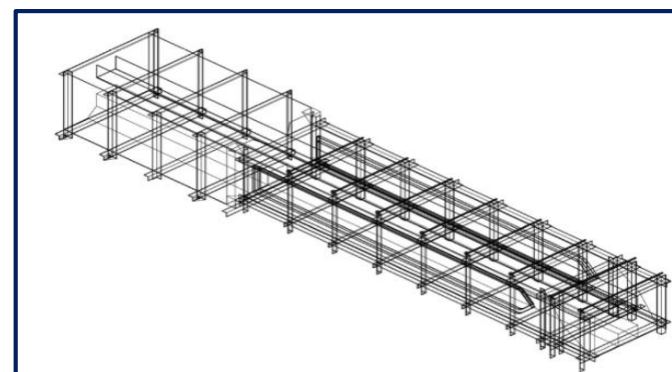
Steel Fencing



Metal Stairs & Railing



Louvers



Precast Moulds



الاسم الأبرز في عالم المسبوكات
Remarkable Name In Casting



Contact US

(شركة مسيك الرياض للصناعة والتجارة) مساهمة مقفلة
Riyadh Foundry. Industrial & Commercial Co. (Closed Shareholding)
C.R: 1010157474 | VAT: 300048407100003
3080 - 2nd Industrial City RIYADH 14332 – 6870 | P.O Box 40726 Riyadh 11511
Tel : +966 11 2664800 | +966 11 4984323
info@riyadhfoundryco.com | www.riyadhfoundry.com.sa