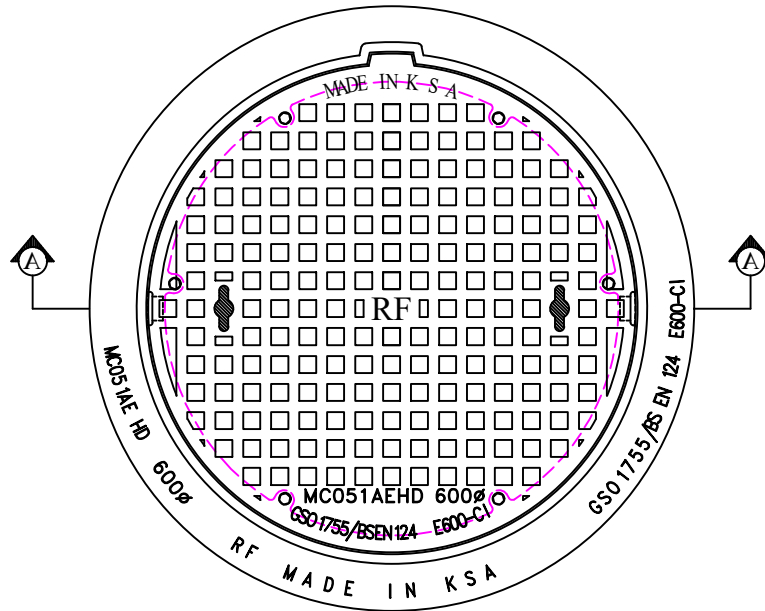


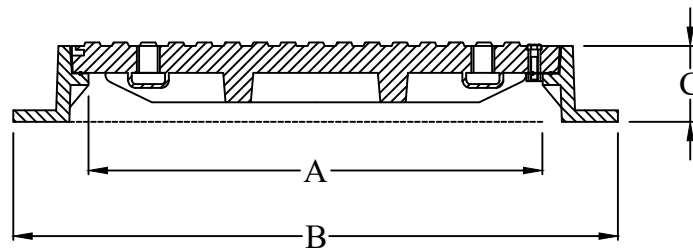
Heavy Duty Grey Cast Iron
Cover and Frame

Features:-

- Closed key Holes
- Cover Secured to Frame
by 6 Nos of Stainless Steel Bolts
- Provided with Rubber Gasket
- Water Tight



PLAN



SECTION "A A"

CATALOGUE NO.	MATERIAL	CLEAR OPENING A(mm)	OVER BASE B(mm)	DEPTH C(mm)	LOADING (TONS)	SPECIFICATIONS
MC- 051 AE (HD)	Cast Iron	600 Ø	800 Ø	100	60	BS EN 124

RIYADH FOUNDRY

Riyadh :- Tel. 4984323

Fax. 4980395



All dimensions are in millimeter		TITLE : Cover and Frame	
		DRAWN : abdul	APPROVED :
NOTE: DESIGN CHANGES RESERVED WITH RIYADH FOUNDRY		CHECKED :	
		DATE : 2023	DRG.NO: MC - 051 AE (HD)
		SCALE : N T S	