

Round Manhole Covers



Main Description:

MR102A-WP Composite Manhole Cover conforms to BS EN124 A15 Class and is suitable for areas which can only be used by pedestrians and pedal cyclists.



EN124 A15
suitable for pedestrians and pedal cyclists



surface pattern and other customization service is supported



two lifting screws are easy for operation



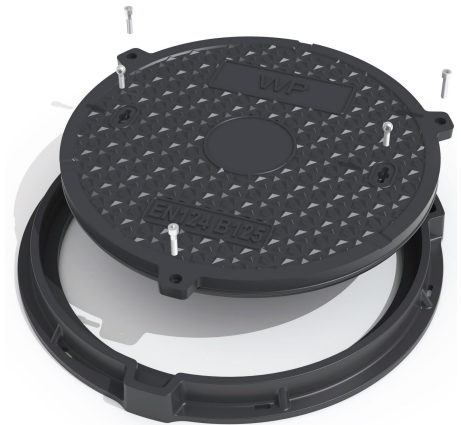
shock absorption by rubber sealing



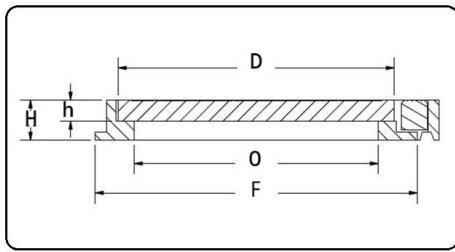
three locking screws, preventing rotation



Water proof with good sealing and prevention of harmful smell leakage



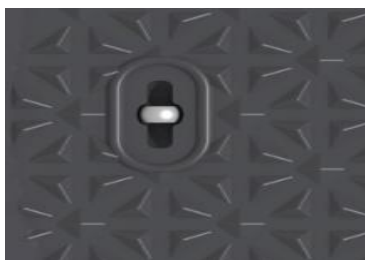
Technical Parameters:



| Product Code | Clear Opening (O) | Cover Size (D) | Over Base (F) | Depth (H) | Cover Depth (h) | Class | Hinge | Features |
|-----------------|-------------------|----------------|---------------|-----------|-----------------|-------|-------|--------------------------|
| RF-FB-MR102A-WP | 600 | 650 | 780 | 40 | 26 | A15 | X | 3 Screw & Weight 19.0 kg |

Product Details :

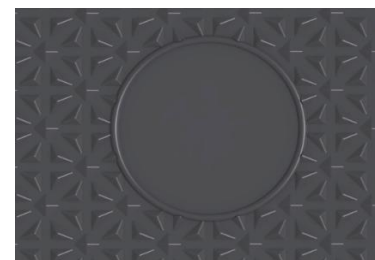
Lifting screw



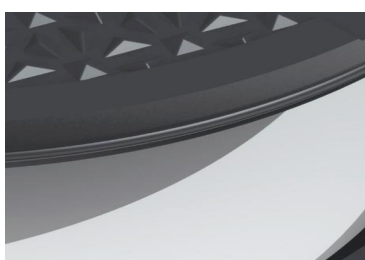
Locking screw



Logo area



Rubber sealing



Antiskid panel

