

# Round Manhole Covers



## Main Description:

MR600D Composite Manhole Cover conforms to BS EN124 D400 Class and is suitable for area of carriageways of roads, hard shoulders and parking areas, for all types of vehicles.



EN124 D400 standard, suit most vehicles



surface pattern and other customization service is supported



two lifting screws are easy for operation



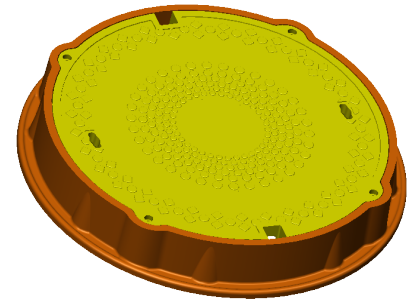
shock absorption by rubber sealing



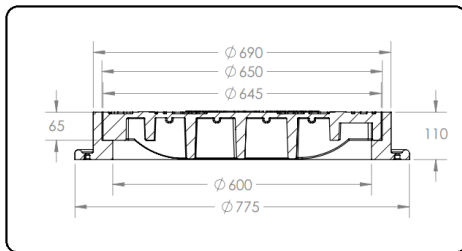
four locking screws, preventing rotation



with good sealing and prevention of harmful smell leakage



## Technical Parameters:



Clear Opening (O)	600	Over Base (F)	75
Cover Size (D)	645	Depth (H)	110
Cover Depth (h)	65	Class	B125
Hinge	N	Lock	4- Screw

## Product Details :

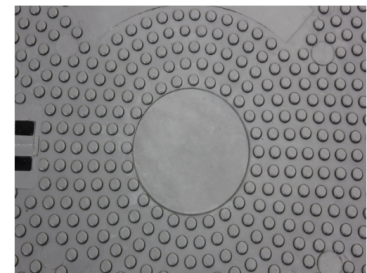
Lifting screw



Locking screw



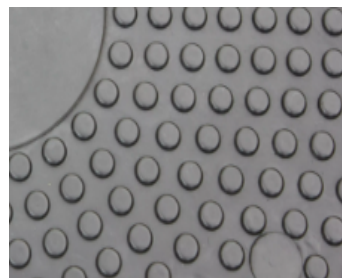
Logo area



Anti Rotate Part



Antiskid panel



Rubber Sealing

