

Square Manhole Covers



Main Description:

MS220B Composite Manhole Cover conforms to BS EN124 and is suitable for footways, pedestrian areas and comparable parks or car parking decks.



surface pattern and other customization service is supported



high anti-corrosion performance



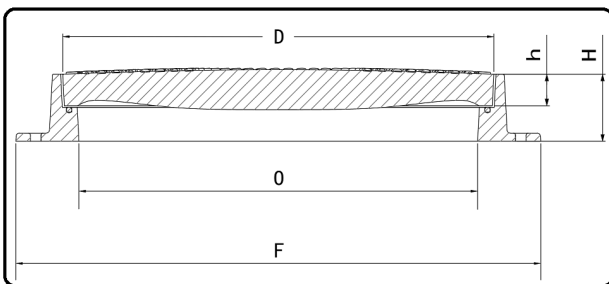
wear resistance



high wave-transmissivity



Technical Parameters



Product Code	Clear Opening (O)	Cover Size (D)	Over Base (F)	Depth (H)	Cover Depth (h)	Class	Hinge	Features
RF-FB-MS220B	450x450	500x500	590x590	35	25	B125	X	2 Screw & Weight 8.6 kg
RF-FB-MS220A	450x450	500x500	590x590	35	25	A15	X	2 Screw & Weight 15.0 kg

Product Details:

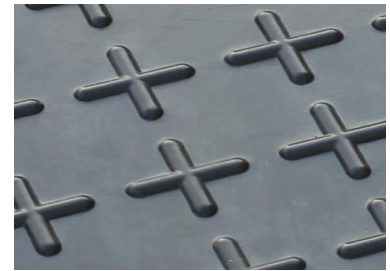
Logo area



Locking screw



Anti-skid pattern



Lifting hole

