

• Main Description:

Riyadh Foundry composite gratings are available from EN124 A15 to D400 loading, which allows to be used in various infrastructure applications .

• Product Details

Installation:

- Lighter than metal or concrete.
- Easy transportation and installation.

Advantages:

- Rapid discharge of water and silt particles.
- High resistance to aggressive substances.
- Dimensional stability to temperature changes.
- High mechanical properties.
- Lower traffic noise levels.
- Range of UV stable colors that will not flake or crack.

Futureproof:

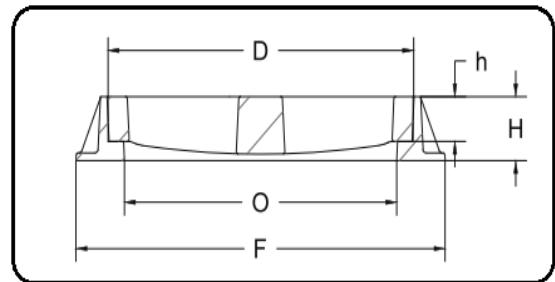
- longer service lifespan.

Environment:

- Corrosion resistance.
- Environmental hardship resistance.

Safety:

- Anti-theft.
- Safe manual handling.



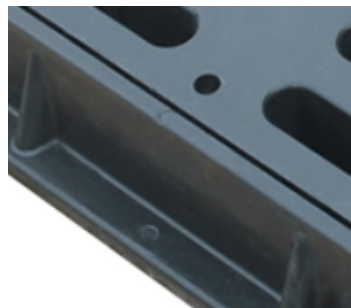
Product Code	Clear Opening (O)	Cover Size (D)	Over Base (F)	Depth (H)	Cover Depth (h)	Class	Hinge	Features
RF-WG401D-H	450X450	515X515	650X550	100	75	D400	Y	Screw lock
RF-WG415C	300X400	350X450	450X550	73	50	C250	N	Screw lock
RF-WG417C	400X510	450X580	565X695	75	50	C250	N	Screw lock

Product Details:

Normal Design



Screw lock



Hinges

